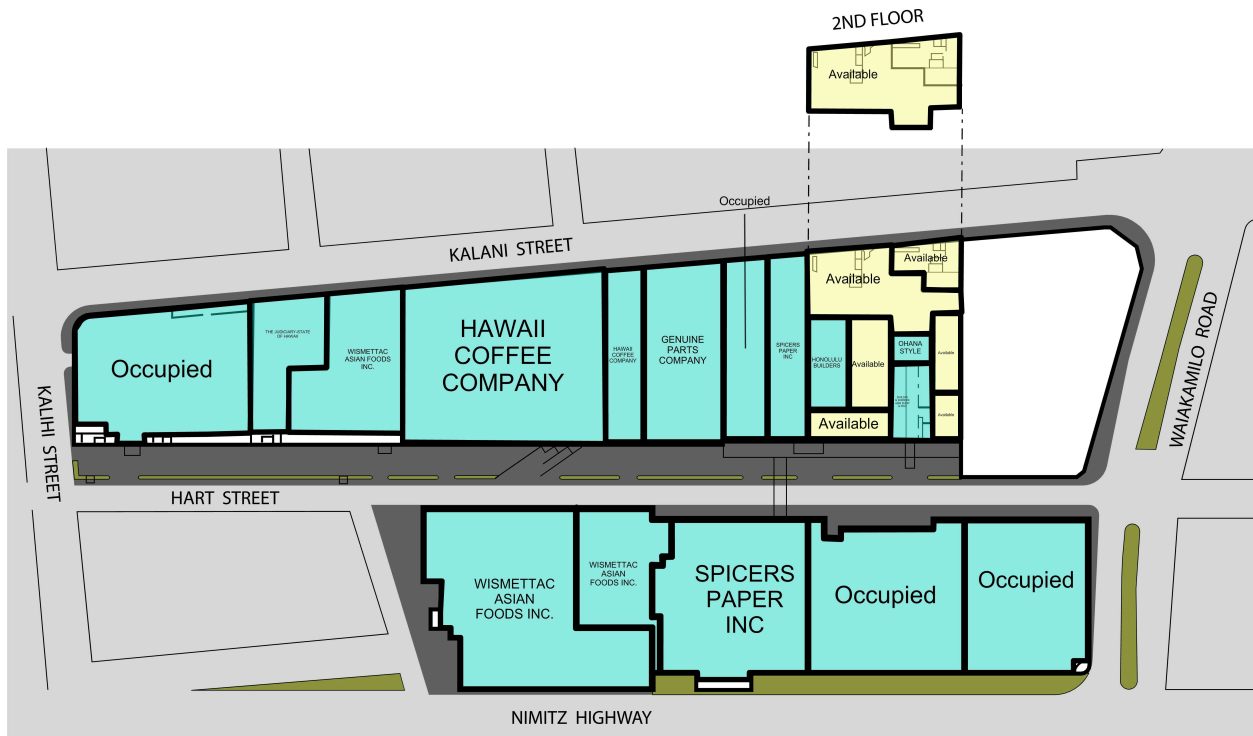


# WAIAKAMILO INDUSTRIAL COMPLEX



A320A Occupied	36,480 SF	B020B HONOLULU BUILDERS	6,240 SF
A320B Occupied	38,660 SF	<b>B021A AVAILABLE</b>	4,080 SF
A320C SPICERS PAPER INC	40,194 SF	<b>B021B AVAILABLE</b>	6,310 SF
A320D WISMETTAC ASIAN FOODS INC.	17,598 SF	<b>B021C AVAILABLE</b>	14,636 SF
A320E WISMETTAC ASIAN FOODS INC.	50,644 SF	B022 OHANA STYLE	2,160 SF
B001 Occupied	40,220 SF	B022B BUILDING EGRESS/ ABM SHOP & PKG	5,394 SF
B006 THE JUDICIARY-STATE OF HAWAII	14,000 SF	<b>B023A AVAILABLE</b>	2,184 SF
B007B WISMETTAC ASIAN FOODS INC.	23,651 SF	<b>B023B AVAILABLE</b>	3,613 SF
B010 HAWAII COFFEE COMPANY	56,285 SF	<b>B023C AVAILABLE</b>	4,299 SF
B015 HAWAII COFFEE COMPANY	11,897 SF	B1617 GENUINE PARTS COMPANY	24,228 SF
B018A Occupied	12,912 SF	<b>BMEZC AVAILABLE</b>	23,649 SF
B019A SPICERS PAPER INC	13,122 SF		