

SALT

333 Keawe Street, HONOLULU, HI 96813



KAMEHAMEHA SCHOOLS®



The 2018 Retail Merchants of Hawai'i Shopping Center of the Year winner, SALT at Our Kaka'ako consists of 80,000 square feet of retail, restaurant and office space with ample customer parking and walkable streets. The unique tenant mix, open-air spaces and people and pet friendly neighborhood provide for a meaningful customer experience centered around the arts, culture and creative hub on Auahi, Keawe and Coral streets. It's an emerging epicenter for Hawai'i's urban-island culture that is an incubator for a variety of artists, chefs, influencers and entrepreneurs. Rooted in Hawaiian cultural values, SALT at Our Kaka'ako is built on empowering creativity, cultivating innovation and building a truly unique, local community.

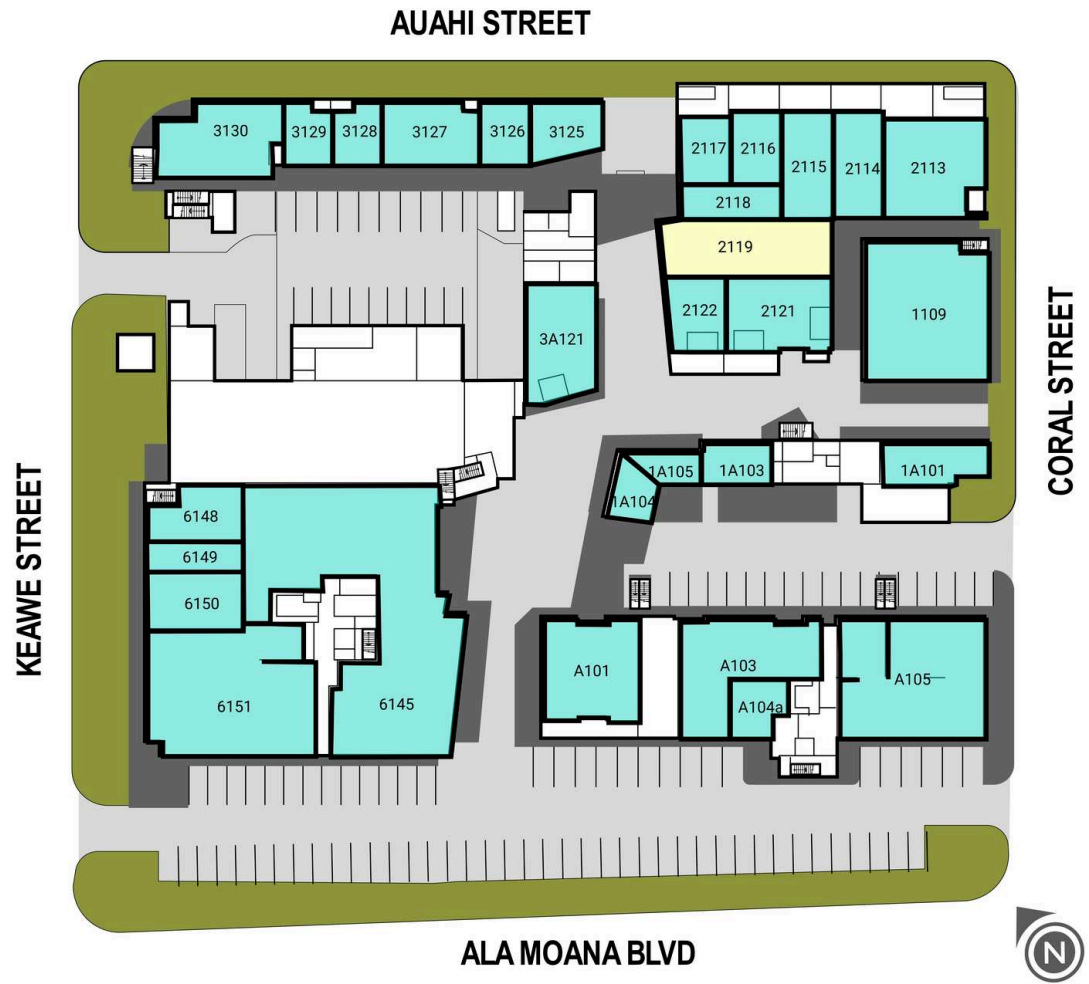
FOR LEASING INFORMATION

Gabriele Chock

(808) 524-2666

Gabrielle.Chock@colliers.com

GLA	DEMOGRAPHICS	1 MILE	3 MILE	5 MILE
68,197	Population	23,499	203,158	321,100
	Total Households	11,604	84,127	123,271
	Average HouseHold Income	\$106,947	\$88,371	\$97,412



SALT

SUITE	Tenant Name	GLA(SF)	SUITE	Tenant Name	GLA(SF)	SUITE	Tenant Name	GLA(SF)
A101	STARBUCKS COFFEE	1,851 SF	1109	THE BOILING CRAB	3,315 SF	3126	NOHO HOME	702 SF
A102	LANIKAI JUICE	850 SF	2113	MORNING BREW	1,940 SF	3127	NOHO HOME	1,127 SF
A103	MANTECH ADVANCED SYSTEMS INTL INC	2,135 SF	2114	ALO CAFE LLC	1,032 SF	3128	INSOMNIA ESPRESSO COFFEE	610 SF
A104a	FREE PARKING STUDIO	583 SF	2115	HERE	1,021 SF	3129	BEVY / TAKO'AKO	604 SF
A105	HIGHWAY INN	3,366 SF	2116	UIS LLC	692 SF	3130	BEVY	1,692 SF
ATM1	BANK OF HAWAII		2117	STOKEHOUSE	646 SF	6145	MOKU KITCHEN	7,129 SF
1A101	PARIS HAWAII	819 SF	2118	9 BAR HNL	667 SF	6148	OUR KAKAAKO OFFICE	782 SF
1A103	MYCROFFLE INC.	572 SF	2119	AVAILABLE	1,817 SF	6149	SALON TIFFANY	492 SF
1A104	ARVO CAFE LLC	488 SF	2121	VEIN AT KAKAAKO	1,533 SF	6150	THE THINGS WE DO INC.	1,100 SF
1A105	LONOHANA CHOCOLATE	412 SF	2122	KAHALA SPORTSWEAR	831 SF	6151	SPRINT	3,934 SF
3A121	VILLAGE BOTTLE SHOP & TASTING ROOM	1,540 SF	3125	PIONEER SALOON	804 SF			

SALT



SALT

SUITE	Tenant Name	GLA(SF)	SUITE	Tenant Name	GLA(SF)	SUITE	Tenant Name	GLA(SF)
1A205	MANA PLUS PUA INC.	611 SF	3200	HUNGRY EARS RECORDS	423 SF	5000A	AVAILABLE	300 SF
1A206	AVAILABLE		3201	HUNGRY EARS RECORDS	1,305 SF	6215	KS FAD	4,230 SF
1A207	AVAILABLE	904 SF	3203	EPIK CHIRO	1,195 SF	6217	ORANGETHEORY FITNESS	3,466 SF
1204	THE BOILING CRAB		3204	EPIK CHIRO		6219	SIMPLIFY SERVICES INC.	2,643 SF
2113A	MORNING BREW		3205	KIIKAU PRINTERS L.L.C.	611 SF	6220	LASH LOVE	970 SF
2216	PITCH SPORTS BAR	1,844 SF	3206	LOONEY & ASSOCIATES	1,024 SF	6220A	REVOLUSUN	2,030 SF
2218	PITCH SPORTS BAR	751 SF	3215	TREEHOUSE	804 SF			