

DEPOT CENTER

94-239 WAIPAHU DEPOT RD, WAIPAHU, HI 96797



KAMEHAMEHA SCHOOLS®



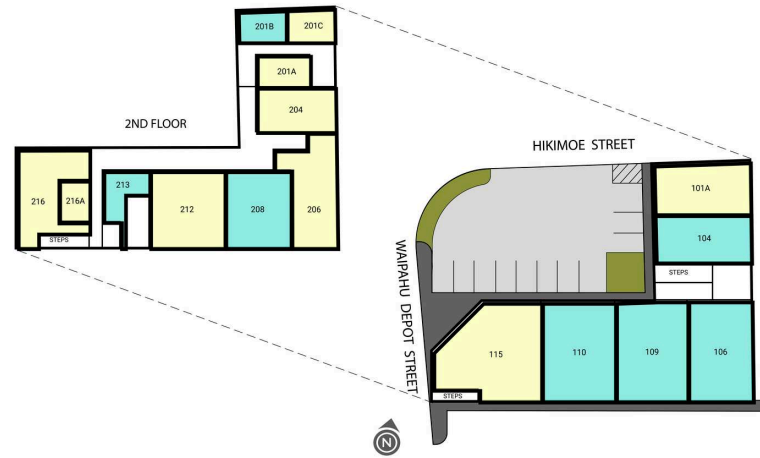
The Depot Center in Waipahu consists of primarily office spaces and a few retail tenants. The Center provides much needed services to the community to include medical, dental and other professional trades. Conveniently located behind Times Supermarket, one block mauka of Farrington Highway, the building has a charm that harkens back to Waipahu being the center of business in West O'ahu.

FOR LEASING INFORMATION

Alexander Peach
Colliers International
(808) 524-2666
alexander.peach@colliers.com

GLA	DEMOGRAPHICS	1 MILE	3 MILE	5 MILE
10,766	Population	31,086	101,239	237,085
	Total Households	6,747	26,446	66,948
	Average HouseHold Income	\$105,426	\$109,643	\$116,123

DEPOT CENTER



SUITE	Tenant Name	GLA(SF)	SUITE	Tenant Name	GLA(SF)	SUITE	Tenant Name	GLA(SF)
101A	AVAILABLE	640 SF	201A	AVAILABLE	330 SF	208	TERRI J.Y.H. ANDRADE D.D.S.	650 SF
104	RONALD C. RAVELO	710 SF	201B	TRADING CARD RESOURCES LLC	389 SF	212	AVAILABLE	982 SF
106	HOWARD F. NEUDORF	580 SF	201C	AVAILABLE	319 SF	213	GLENN M. WATANABE O.D.	555 SF
109	DENNIS I. MAEHARA M.D.	854 SF	204	AVAILABLE	600 SF	216	AVAILABLE	890 SF
110	WORLD MASSAGE LLC	854 SF	206	AVAILABLE	766 SF	216A	AVAILABLE	382 SF
115	AVAILABLE	1,265 SF						