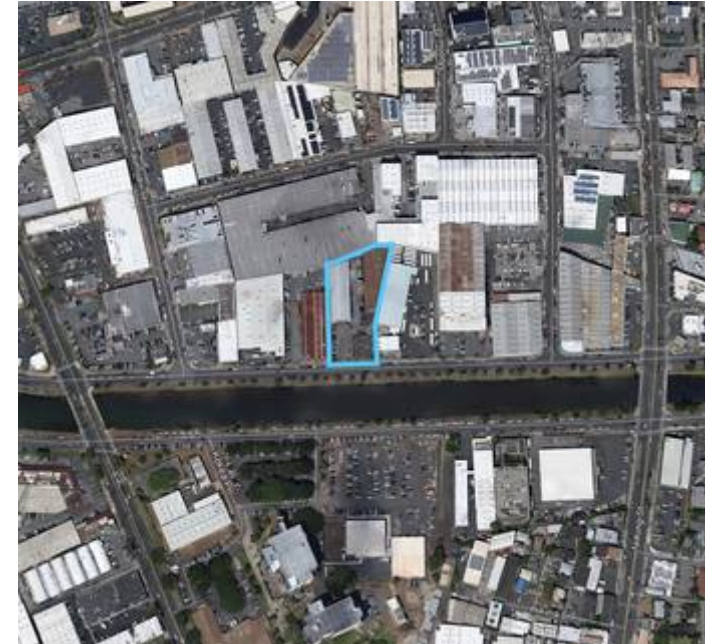


740 KOHOU

740 KOHOU ST, HONOLULU, HI 96817



KAMEHAMEHA SCHOOLS®



Kohou Industrial Center is a multi-use industrial facility with three stand-alone buildings servicing retail/restaurant and industrial uses with on-site parking. Property is adjacent to Honolulu Community College and in close proximity to major big box retailers. Only 1.8 miles from Downtown, 2.6 miles from the Matson docks and 4.4 miles from Waikīkī. Flexible IMX-1 zoning allows for a wide range of uses.

FOR LEASING INFORMATION

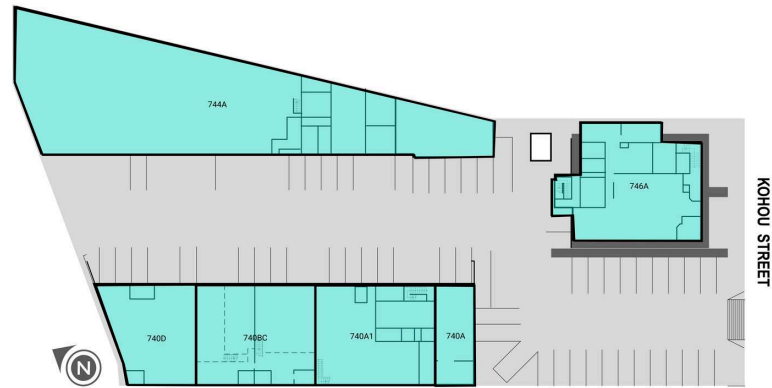
Anthony Provenzano

(808) 544-1780

aprovenzano@chaneybrooks.com

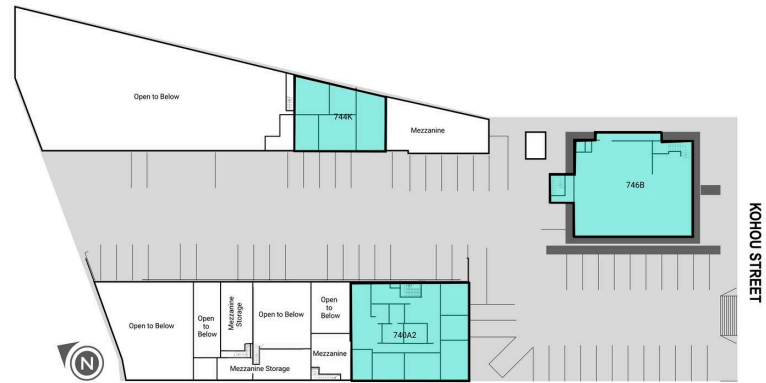
GLA	DEMOGRAPHICS	1 MILE	3 MILE	5 MILE
31,469	Population	43,151	185,842	319,650
	Total Households	12,521	68,554	120,022
	Average HouseHold Income	\$77,427	\$93,361	\$96,133

740 KOHOU



SUITE	Tenant Name	GLA(SF)
740A	MEMORIAL TRANSPORT OF HAWAII LLC	1,051 SF
740A1	MEMORIAL TRANSPORT OF HAWAII LLC	3,050 SF
740BC	CHEAP PLASTIC CONTAINERS INC.	3,050 SF
740D	NKS INVESTMENTS LLC	2,098 SF
744A	MEGA CONSTRUCTION INC.	3,398 SF
746A	ATG ENTERPRISES INC.	3,346 SF

740 KOHOU



SUITE	Tenant Name	GLA(SF)
740A2	MEMORIAL TRANSPORT OF HAWAII LLC	3,597 SF
744K	MEGA CONSTRUCTION INC.	8,439 SF
746B	KAKAAKO BOXING CLUB INC.	3,440 SF