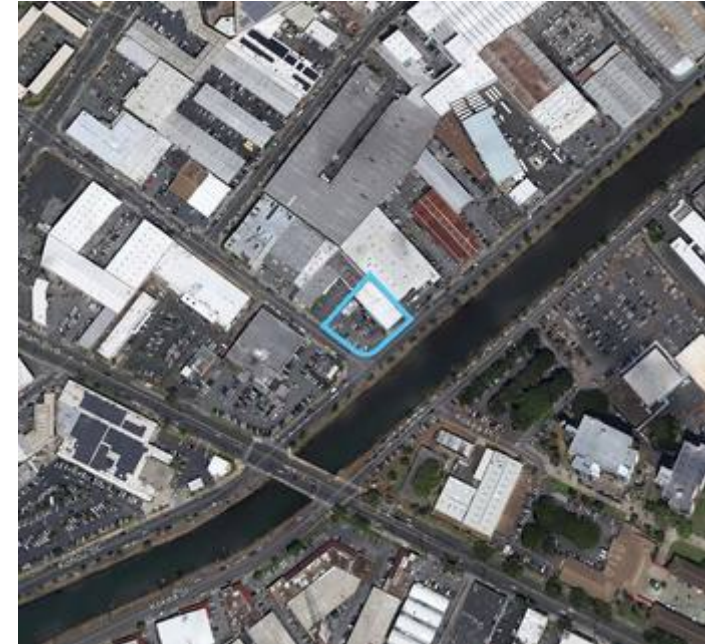


650 KOHOU STREET

650 KOHOU ST, HONOLULU, HI 96817



KAMEHAMEHA SCHOOLS®



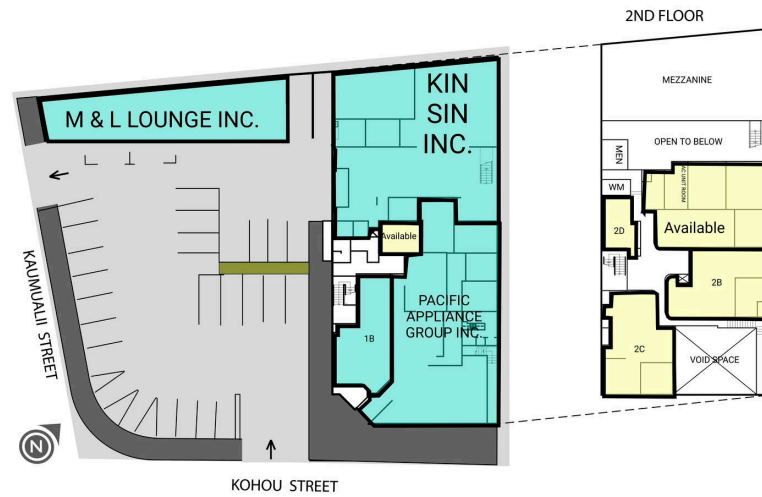
650 Kohou is a commercial center offering retail, office, and industrial spaces. Located just one block mauka of Dillingham Boulevard, the property is in the heart of Kapālama. This visible, convenient central location provides free on-site customer parking and easy access to the H-1 freeway, Nimitz Highway and Dillingham Boulevard.

FOR LEASING INFORMATION

Alika Cosner
Colliers International
(808) 523-8339
Alika.Cosner@colliers.com

GLA	DEMOGRAPHICS	1 MILE	3 MILE	5 MILE
13,708	Population	42,254	185,263	318,772
	Total Households	11,874	68,342	119,740
	Average HouseHold Income	\$75,382	\$93,254	\$96,093

650 KOHOU STREET



SUITE	Tenant Name	GLA(SF)
LOUNG	M & L LOUNGE INC.	2,012 SF
1A	PACIFIC APPLIANCE GROUP INC.	3,086 SF
1B	AHMADIYYA MOVEMENT IN ISLAM INC. USA	816 SF
1C	AVAILABLE	152 SF
1D	KIN SIN INC.	3,586 SF

SUITE	Tenant Name	GLA(SF)
2A	AVAILABLE	1,517 SF
2B	AVAILABLE	1,064 SF
2C	AVAILABLE	1,158 SF
2D	AVAILABLE	317 SF