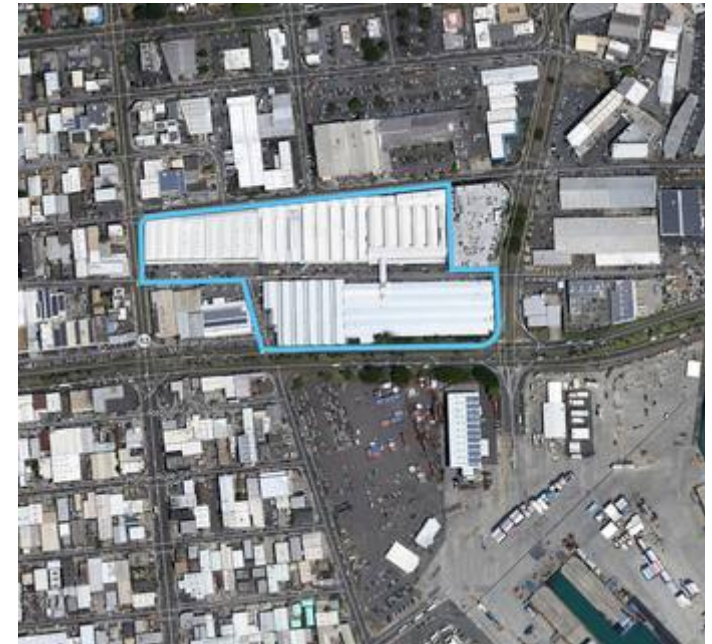


# WAIAKAMILO INDUSTRIAL COMPLEX

320 WAIAKAMILO RD, HONOLULU , HI 96817



KAMEHAMEHA SCHOOLS®



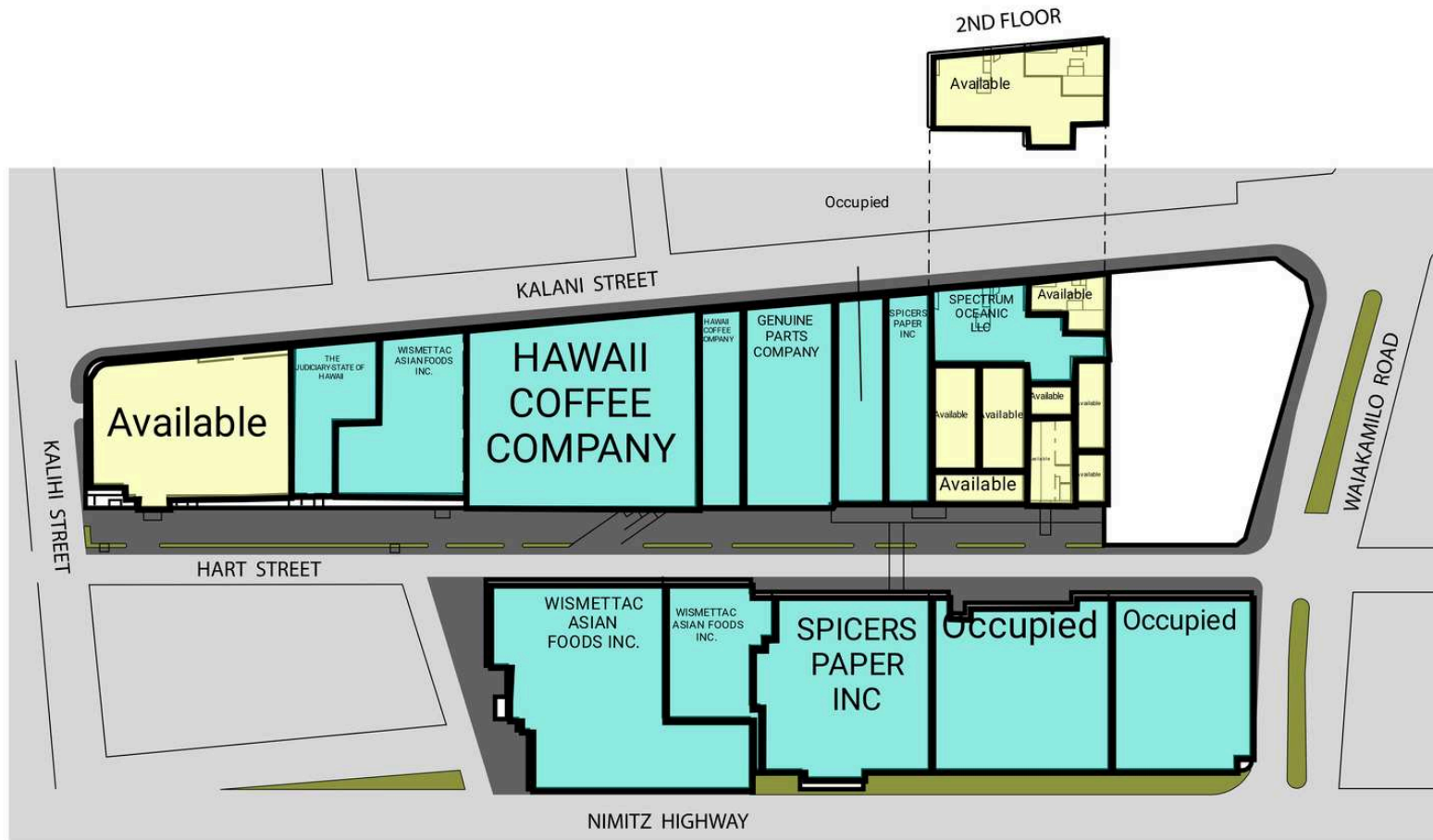
This multi-tenant industrial property is comprised of two sprinklered warehouse buildings with associated parking. Located 2.4 miles from the Central Business District and minutes away from Honoulu Harbor. The mauka building enjoys dual street access from Hart Street and Kalani Street. Flexible IMX-1 zoning allows a wide range of uses.

## FOR LEASING INFORMATION

Nick Adler  
CBRE  
(808) 541-5149  
nick.adler@cbre.com

<b>GLA</b>	<b>DEMOGRAPHICS</b>	<b>1 MILE</b>	<b>3 MILE</b>	<b>5 MILE</b>
440,703	Population	24,886	175,033	319,025
	Total Households	6,075	61,172	118,000
	Average HouseHold Income	\$78,182	\$87,146	\$86,523

# WAIAKAMILO INDUSTRIAL COMPLEX



# WAIAKAMILO INDUSTRIAL COMPLEX

SUITE	Tenant Name	GLA(SF)	SUITE	Tenant Name	GLA(SF)	SUITE	Tenant Name	GLA(SF)
A320A	OCCUPIED	36,480 SF	B010	HAWAII COFFEE COMPANY	56,285 SF	B022	AVAILABLE	
A320B	OCCUPIED	38,660 SF	B015	HAWAII COFFEE COMPANY	11,897 SF	B022B	AVAILABLE	
A320C	SPICERS PAPER INC	40,194 SF	B018A	OCCUPIED	12,912 SF	B023A	AVAILABLE	
A320D	WISMETTAC ASIAN FOODS INC.	17,598 SF	B019A	SPICERS PAPER INC	13,122 SF	B023B	AVAILABLE	
A320E	WISMETTAC ASIAN FOODS INC.	50,644 SF	B020B	AVAILABLE		B023C	AVAILABLE	
B001	AVAILABLE	40,220 SF	B021A	AVAILABLE		B1617	GENUINE PARTS COMPANY	24,228 SF
B006	THE JUDICIARY-STATE OF HAWAII	14,000 SF	B021B	AVAILABLE		BME18	AVAILABLE	2,430 SF
B007B	WISMETTAC ASIAN FOODS INC.	23,651 SF	B021C	SPECTRUM OCEANIC LLC	58,382 SF	BMEZC	AVAILABLE	